

## ExamVue Fluoroscopy

Real-Time Image Processing S/W

### From Image Stitching to DICOM 3.0

DynaVue includes ExamVue features such as DICOM Modality Worklist, DICOM Print, Reject, CD-DVD Burn, Image Stitching, Procedure Code Mapping function

### FPS mode (High Image Quality)

GPU based real-time image speed is 30 FPS when applied post-image processing engine

### Radiography + Fluoroscopy

Available to choose each mode

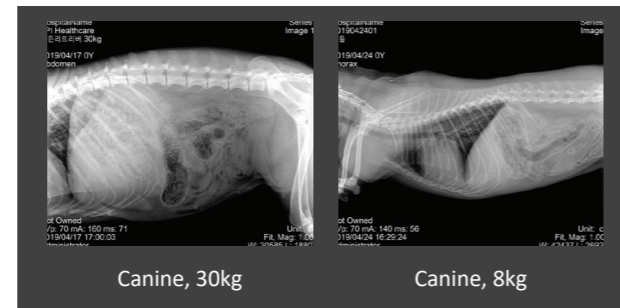
#### FLO Sample Image



Feline

for FLO sample video

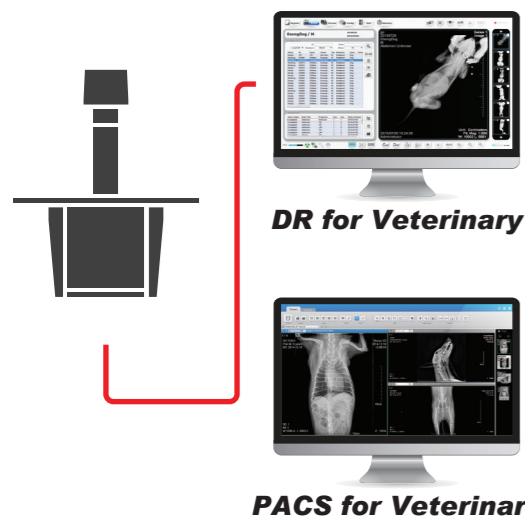
#### RAD Sample Image



Canine, 30kg

Canine, 8kg

### ExamVue Software



DR for Veterinary

PACS for Veterinary

Frame rate control **to acquire real-time images** up to 30 FPS

DICOM Cine-loop Display (with Previous, Pause, Play and Image slider bar)

Imaging and Annotation Tools  
(VHS, Norberg Angle, Zoom, Pan, Crop, Invert, Rotation, Angle, Label, Text)

Powerful User Features  
(Image import / export, Image comparison, Multi view, Image expansion, Full screen, Auto collimation, Reject/Accept, Image capture, Smart APR (Anatomic Programmed Radiography))  
*\* Only Available in Fluoroscopy Viewer*

Smart Window Level

DICOM3.0 Compatibility

Post Image processing mode for each body part

Changeable Skin color (Green Tea, Strawberry, Mint, Chocolate, Banana, Vanilla)



Since 1980



X-ray Grids



Radiography System



Detector



Software



Computed Radiography



X-ray Accessories



Gastroenterology



# DynaVue

Solution for Veterinary Interventional Radiology Examination

## DR & Real-time FLO

### Advantage

- Target: Small & Medium interventional practice
- Larger FOV(17x17") compared to C-arm (max.12 inch)
- Image distortion free compared to C-arm (Image Intensifier)
- Space saving
- Minimally invasive diagnostic and therapeutic
- Real-time image processing (30 FPS for FLO)

JPI Healthcare Co.,Ltd.

608-ho, 28, Digital-ro 33-gil, Guro-gu, 08377 Seoul, Korea

82-2-2108-2580 82-2-2108-1180

www.jpi-korea.com



REF JSA-06-51[Rev.01]

JPI Healthcare

JPI Healthcare Solutions

JPI Japan

JPI Healthcare China

# Total Imaging Solution for VET

## Digital Radiography + Fluoroscopy

2 in 1 system

## As Low As Reasonably Achievable (ALARA)

Pulsed FLO manage reduced dose for you and your pet

\* 10ms/pulse

## 10kW Monoblock Type

15kW Inverter based system

## The World's First 43 x 43cm Large FOV

Detector allows dynamic performance

## Space Saving at Practice

Small footprint to fit your current clinic room



## Great Image Quality

### PSA (Photodiode Sensor Array)

Optimized Digital X-ray Image

### Wavelet Transform

Offering enhanced real-time FLO

## User Friendly Design

### 4 Way Floating Table

Enhance your workflow

### 23 inch Touch Screen Display

Intuitive UI

## Large Field of View Dynamic Exam



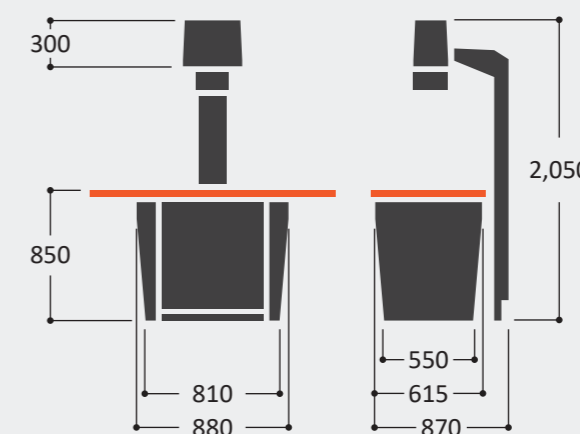
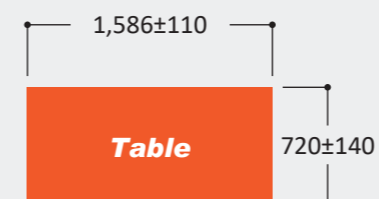
### Applications

- Minimally invasive Fracture repair
- Intraluminal Stenting for the Treatment of Tracheal Collapse
- Urethral and Colonic Obstructive Disease
- Vascular Procedures
- Orthopedic Procedures
- Contrast Studies of the Gastrointestinal Tract

## Specifications

<b>Monoblock</b>	<b>RAD mode</b>	<b>Power</b>	10kW (Inverter 15kW)
		<b>mA</b>	1mA ~ 160mA
		<b>Exposure</b>	200msec
	<b>FLO mode</b>	<b>Focal Spot</b>	0.6
		<b>Power</b>	3.5kW
		<b>mA</b>	1mA ~ 20mA
<b>Collimator</b>	<b>FLO mode</b>	<b>Exposure</b>	10min
		<b>Focal Spot</b>	0.3
		<b>kVP</b>	40 ~ 110kV(1kV step)
	<b>Target Angle</b>	16°	
	<b>Heat Capacity</b>	150kJ	
	<b>Detector</b>	<b>Type</b>	Double slit, Manual
<b>Initial Position</b>		0cm * 0cm	
<b>Max Position</b>		43cm * 43cm	
<b>Laser pointer</b>		Class II	
<b>Detector</b>	<b>RAD mode</b>	<b>LED Lamp</b>	500mA, PWM control
		<b>Pixel resolution</b>	3072 * 3072 (1*1 binning)
		<b>Pixel Pitch</b>	140µm
	<b>FLO mode</b>	<b>Spatial resolution</b>	3.57lp/mm
		<b>Pixel resolution</b>	1536 * 1536 (2*2 binning)
		<b>Pixel Pitch</b>	280µm
		<b>Spatial resolution</b>	1.78lp/mm
	<b>Frame/second</b>	30 (High Image Quality) ; Post-Image Processing	
<b>Active Image size</b>	427 * 427mm		
<b>Bit depth</b>	16bit		

### Dimensions (mm)



### Input Voltage

220Vac 60Hz / 110Vac 60Hz

### Size

720 (W) \* 1,586 (L) \* 2,050 (H)

### Weight

240kg

### Patient Weight

Max. 100kg

\* This Dimension on this catalogue is about measurement of the "DynaVue", and it may be adjusted possibly.